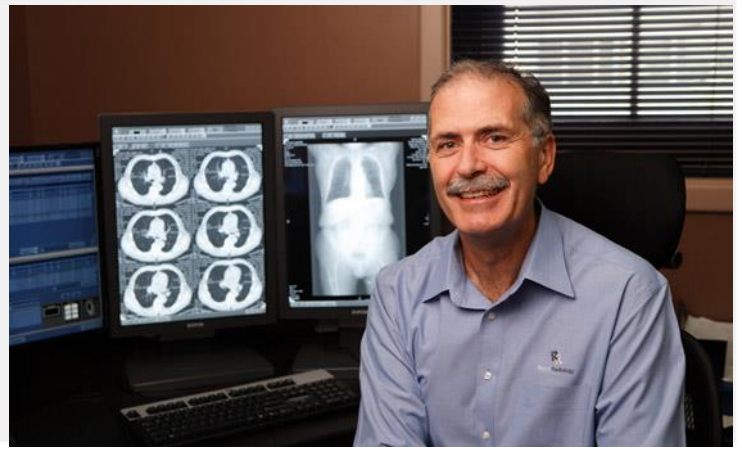


Name: _____

MRN: _____

Appointment Time: _____ AM / PM

Appointment Date: ____ / ____ / ____



CORONARY ARTERY CALCIUM SCORING PATIENT INFORMATION

What is Coronary Artery Calcium Scoring?

Coronary Artery Calcium Scoring is a screening method used to detect calcium build up in the coronary arteries. The CT scanner records a series of detailed images of the blood vessels in your heart very quickly and accurately. Coronary calcium scoring does not, however, return a definitive diagnosis of heart disease. No single test can provide a complete and accurate profile of your risk. Therefore, it is designed to indicate the need for further testing, and so is best used for screening of asymptomatic patients.

Who can have it?

Cardiac scanning is most appropriate for men over 45, women who have passed menopause or are 55 and older, and who have any of the following risk factors:

- Family history of heart disease
- Smoking

- Diabetes
- High cholesterol
- High blood pressure
- Overweight
- Physical Inactivity

Cardiac Scanning is not recommended for patients who have any of the following factors:

- Pregnant
- Known coronary artery disease
- Resting heart rate above 90 – 95 beats per minute (resting tachycardia)

What will you learn?

The scan will give you information about the presence or absence of calcium in your coronary arteries. The radiologist will review your images and determine if coronary calcification is present. If present, a numeric score is given to each area where calcium is seen and a total is given for a “calcium score”.

Please Note:

Please bring the following to your appointment:

- Request form (if referral from GP / Specialist)
- Medicare Card
- Any relevant previous x-rays

Obtaining your results:

Your images will be processed and then reported by a Radiologist. A copy of the report will be sent back to the doctor / specialist who referred you for the examination.

You will need to follow up the results of your examination with your referring doctor / specialist.

Repatriation General Hospital

Daws Road, Daw Park, South Australia 5041

Ph: 8275 1906 | F: 8275 1116

www.repatradiology.com.au | repat.radiology@health.sa.gov.au

Opening Hours: Monday—Friday, 8.30am—5pm

What preparation is involved?

You will need to avoid any caffeine, smoking or vigorous activity for two hours prior to your scan.

Can I take my medications as normal?

You should take all your medications as normal. On the morning of your procedure, medication should be taken with small sips of water. If you have any concerns, please contact our nursing staff on 8275 1961 during business hours.

Are there any risks?

When having a CT scan you will receive a small dose of x-ray radiation. The potential benefits of diagnosing a medical condition are believed to be greater than the risks from receiving a small dose of x-ray radiation.

Before your CT scan please let the Radiographer know if you are, or think you may be pregnant.

What will happen during the examination?

You will be asked to complete a brief questionnaire when you arrive. For the computed tomography (CT) scan of your heart and coronary arteries, you may be asked to either change into a hospital gown or unbutton your shirt and then lie down on the CT table. The technologist will need to place 3 electrocardiogram (ECG) leads on your chest so that

the CT scanner can precisely measure the beating of your heart. You will be asked to hold your breath for a few seconds during scanning. The scan is non-invasive, which means there are no injections, dyes or needles.

How long will the examination take?

The scan takes about 10 minutes and is completely painless.

Who can I contact if I am not sure about something?

If you have any questions at all, please do not hesitate to contact our reception staff on 8275 1906 during business hours, and they will assist with your questions, or direct you to the most appropriate staff member to assist you.

Updated April 2018 (Review August 2020)

Questions?

Please feel free to call us on 82751906 for any questions before or after the procedure and you will be directed to the appropriate health care professional.

Where can I park?

You may park your car on Daws Road, or in the "Clinics" outpatients car park, this is the first entrance on the left off Daws Road. Follow the walkway to Repat Radiology, it is well signposted.

Repatriation General Hospital

Daws Road, Daw Park, South Australia 5041
Ph: 8275 1906 | F: 8275 1116
www.repatradiology.com.au | repat.radiology@health.sa.gov.au

Opening Hours: Monday—Friday, 8.30am—5pm

